

## Overview of Testing Results for Lead in Drinking Water and Corrective Actions for Dam Neck Annex Child Development Center Building 202

The Navy is committed to maintaining safe drinking water on its installations. City of Virginia Beach water supplied to the Navy's water distribution system is regularly tested in compliance with the Safe Drinking Water Act. Exposure to lead is one particular concern because it is a toxic metal that has a range of adverse health effects, including slowed physical and mental development and poor classroom performance in young children. Lead in drinking water may come from the existing plumbing inside buildings, including fittings, solder, water coolers, or water faucets.

The safety and wellness of youth at installation care facilities is one of the top priorities. To reduce children's potential exposure to lead, Navy policy requires that we test the lead content of drinking water in priority areas such as youth centers, child development homes, and child development centers every five years.

Between October 2024 and February 2025, Navy environmental personnel conducted lead testing for drinking water at Child Development Center Building 202 in accordance with Navy and United States Environmental Protection Agency (EPA) guidelines. Water samples were sent to James R. Reed & Associates, a state-certified laboratory, for analysis.

At Building 202, water from outlets used for drinking, cooking, and washing was tested. Out of 41 samples, all drinking water tested less than the 10 parts per billion (ppb) screening level for lead, which is a level designated by the EPA to guide whether additional action is necessary.

A summary of all test results is included for your information in the following enclosures:

- **Enclosure 1:** Summary of results
  - **Table 1 Summary of Results** summarizes the data by category of use. The table provides a description of each sampling location using four columns; *Category*, *Outlet No.*, *Sample Identification*, and *Outlet Description*. The *Category* column contains information about whether the outlet is used for drinking water (water fountain), cooking (food preparation), or washing (primarily handwashing). The *Outlet No.* is the inventory number for the outlets at the facility. The *Sample Identification* column is the unique identification used to label each sample bottle. The *Outlet Description* column contains additional information to describe the outlet sampled under each category. The next set of columns in **Table 1** provides *Initial Sampling Results*. EPA sampling protocol requires water to not be used from 8 to 18 hours prior to first draw sampling, to the extent practicable. Therefore, the *Initial Sampling Results* were from first draw samples collected in the early morning.
  - **Table 2 Summary of Statistics** summarizes all data collected at the building during this event.
- **Enclosure 2:** Floor plan of Dam Neck Annex Child Development Center Building 202 and a summary of the outlets tested.

Enclosure 1  
Priority Areas Lead Testing and Corrective Actions  
Dam Neck Annex Child Development Center Building 202

Table 1. Summary of Results

SAMPLING LOCATION DESCRIPTION				INITIAL SAMPLING RESULTS			RE-SAMPLING RESULTS			CORRECTIVE ACTIONS	POST REMEDIATION SAMPLING RESULTS		Notes
				Recommended Level = 10 parts per billion (ppb)							Recommended Level = 10 ppb		
CATEGORY Water Intended For:	SAMPLE Identification	Outlet No.	Outlet Description	First Draw (ppb)	Retest required?	Date Fixture Secured	Water Fountain 15 min. Follow up Flush Sample - Collected day before First Draw Sampling (ppb)	First Draw (ppb)	Follow up Flush - Collected 30 seconds after First Draw Sampling (ppb)	Description	First Draw (ppb)	Follow up Flush - Collected 30 seconds after First Draw Sampling (ppb)	
				10/4/2024			N/A	N/A	N/A		N/A		
				10/14/2024			N/A	N/A	N/A		N/A		
DRINKING	OC-202-HALL-WFCA-FD	1	Hallway water fountain (cooler) A	non-detect	No	N/A	N/A	N/A	N/A	N/A	N/A	N/A	
DRINKING	OC-202-HALL-WFCB-FD	2	Hallway water fountain (cooler) B	non-detect	No	N/A	N/A	N/A	N/A	N/A	N/A	N/A	
DRINKING	OC-202-RM112-WFCOMB-FD	13	Room 112 water fountain from combination sink	non-detect	No	N/A	N/A	N/A	N/A	N/A	N/A	N/A	
DRINKING	OC-202-RM113-WFCOMB-FD	15	Room 113 water fountain from combination sink	non-detect	No	N/A	N/A	N/A	N/A	N/A	N/A	N/A	
DRINKING	OC-202-RM114-WFCOMB-FD	20	Room 114 water fountain from combination sink	non-detect	No	N/A	N/A	N/A	N/A	N/A	N/A	N/A	
DRINKING	OC-202-RM115-WFCOMB-FD	23	Room 115 water fountain from combination sink	non-detect	No	N/A	N/A	N/A	N/A	N/A	N/A	N/A	
DRINKING	OC-202-RM118-WFCOMB-FD	27	Room 118 water fountain from combination sink	non-detect	No	N/A	N/A	N/A	N/A	N/A	N/A	N/A	
DRINKING	OC-202-RM119-WFCOMB-FD	31	Room 119 water fountain from combination sink	non-detect	No	N/A	N/A	N/A	N/A	N/A	N/A	N/A	
DRINKING	OC-202-RM120-WFCOMB-FD	35	Room 120 water fountain from combination sink	non-detect	No	N/A	N/A	N/A	N/A	N/A	N/A	N/A	
DRINKING	OC-202-RM121-WFCOMB-FD	39	Room 121 water fountain from combination sink	non-detect	No	N/A	N/A	N/A	N/A	N/A	N/A	N/A	
DRINKING	OC-202-RM122-WFCOMB-FD	45	Room 122 water fountain from combination sink	non-detect	No	N/A	N/A	N/A	N/A	N/A	N/A	N/A	
COOKING	OC-202-K-KA-FD	6	Kitchen sink A used for dishwashing and food preparation	2	No	N/A	N/A	N/A	N/A	N/A	N/A	N/A	
COOKING	OC-202-K-KB-FD	8	Kitchen sink B used for dishwashing and food preparation	2	No	N/A	N/A	N/A	N/A	N/A	N/A	N/A	
BRUSHING/WASHING	OC-202-RM114-TB-FD	19	Room 114 low hand washing and toothbrushing faucet	non-detect	No	N/A	N/A	N/A	N/A	N/A	N/A	N/A	
BRUSHING/WASHING	OC-202-RM115-TBCOMB-FD	22	Room 115 low hand washing and toothbrushing faucet from combination sink	non-detect	No	N/A	N/A	N/A	N/A	N/A	N/A	N/A	
BRUSHING/WASHING	OC-202-RM118-TBCOMB-FD	26	Room 118 low hand washing and toothbrushing faucet from combination sink	non-detect	No	N/A	N/A	N/A	N/A	N/A	N/A	N/A	
BRUSHING/WASHING	OC-202-RM119-TBCOMB-FD	30	Room 119 low hand washing and toothbrushing faucet from combination sink	non-detect	No	N/A	N/A	N/A	N/A	N/A	N/A	N/A	
BRUSHING/WASHING	OC-202-RM120-TBCOMB-FD	34	Room 120 low hand washing and toothbrushing faucet from combination sink	non-detect	No	N/A	N/A	N/A	N/A	N/A	N/A	N/A	
BRUSHING/WASHING	OC-202-RM121-TBCOMB-FD	38	Room 121 low hand washing and toothbrushing faucet from combination sink	non-detect	No	N/A	N/A	N/A	N/A	N/A	N/A	N/A	

Enclosure 1  
Priority Areas Lead Testing and Corrective Actions  
Dam Neck Annex Child Development Center Building 202

SAMPLING LOCATION DESCRIPTION				INITIAL SAMPLING RESULTS		RE-SAMPLING RESULTS			CORRECTIVE ACTIONS	POST REMEDIATION SAMPLING RESULTS			Notes
				Recommended Level = 10 parts per billion (ppb)						Recommended Level = 10 ppb			
CATEGORY Water Intended For:	SAMPLE Identification	Outlet No.	Outlet Description	First Draw (ppb)	Retest required?	Date Fixture Secured	Water Fountain 15 min. Follow up Flush Sample - Collected day before First Draw Sampling (ppb)	First Draw (ppb)	Follow up Flush - Collected 30 seconds after First Draw Sampling (ppb)	Description	First Draw (ppb)	Follow up Flush - Collected 30 seconds after First Draw Sampling (ppb)	
SAMPLING DATE				10/4/2024			N/A	N/A	N/A		N/A		
RESULTS DATE				10/14/2024			N/A	N/A	N/A		N/A		
BRUSHING/WASHING	OC-202-RM122-TBCOMB-FD	44	Room 122 low hand washing and toothbrushing faucet from combination sink	non-detect	No	N/A	N/A	N/A	N/A	N/A	N/A	N/A	N/A
WASHING	OC-202-BATHA-HHW-FD	3	Restroom A high hand washing faucet	2	No	N/A	N/A	N/A	N/A	N/A	N/A	N/A	N/A
WASHING	OC-202-BATHB-HHW-FD	5	Restroom B high hand washing faucet	non-detect	No	N/A	N/A	N/A	N/A	N/A	N/A	N/A	N/A
WASHING	OC-202-K-HHW-FD	7	Kitchen high hand washing faucet (with emergency eye wash station)	non-detect	No	N/A	N/A	N/A	N/A	N/A	N/A	N/A	N/A
WASHING	OC-202-RM112-HHW-FD	12	Room 112 high hand washing faucet	non-detect	No	N/A	N/A	N/A	N/A	N/A	N/A	N/A	N/A
WASHING	OC-202-RM112-HHWCOMB-FD	14	Room 112 high hand washing faucet from combination sink	1	No	N/A	N/A	N/A	N/A	N/A	N/A	N/A	N/A
WASHING	OC-202-RM113-HHWCOMB-FD	16	Room 113 high hand washing faucet from combination sink	non-detect	No	N/A	N/A	N/A	N/A	N/A	N/A	N/A	N/A
WASHING	OC-202-RM113-HHW-FD	17	Room 113 high hand washing faucet	non-detect	No	N/A	N/A	N/A	N/A	N/A	N/A	N/A	N/A
WASHING	OC-202-RM114-HHWA-FD	18	Room 114 high hand washing faucet A	non-detect	No	N/A	N/A	N/A	N/A	N/A	N/A	N/A	N/A
WASHING	OC-202-RM114-HHWCOMB-FD	21	Room 114 high hand washing faucet from combination sink	non-detect	No	N/A	N/A	N/A	N/A	N/A	N/A	N/A	N/A
WASHING	OC-202-RM115-LHW-FD	24	Room 115 low hand washing faucet	non-detect	No	N/A	N/A	N/A	N/A	N/A	N/A	N/A	N/A
WASHING	OC-202-RM115-HHW-FD	25	Room 115 high hand washing faucet	non-detect	No	N/A	N/A	N/A	N/A	N/A	N/A	N/A	N/A
WASHING	OC-202-RM118-LHW-FD	28	Room 118 low hand washing faucet	non-detect	No	N/A	N/A	N/A	N/A	N/A	N/A	N/A	N/A
WASHING	OC-202-RM118-HHW-FD	29	Room 118 high hand washing faucet	non-detect	No	N/A	N/A	N/A	N/A	N/A	N/A	N/A	N/A
WASHING	OC-202-RM119-LHW-FD	32	Room 119 low hand washing faucet	non-detect	No	N/A	N/A	N/A	N/A	N/A	N/A	N/A	N/A
WASHING	OC-202-RM119-HHW-FD	33	Room 119 high hand washing faucet	non-detect	No	N/A	N/A	N/A	N/A	N/A	N/A	N/A	N/A
WASHING	OC-202-RM120-LHW-FD	36	Room 120 low hand washing faucet	non-detect	No	N/A	N/A	N/A	N/A	N/A	N/A	N/A	N/A
WASHING	OC-202-RM120-HHW-FD	37	Room 120 high hand washing faucet	non-detect	No	N/A	N/A	N/A	N/A	N/A	N/A	N/A	N/A
WASHING	OC-202-RM121-LHW-FD	40	Room 121 low hand washing faucet	non-detect	No	N/A	N/A	N/A	N/A	N/A	N/A	N/A	N/A
WASHING	OC-202-RM121-HHW-FD	41	Room 121 high hand washing faucet	non-detect	No	N/A	N/A	N/A	N/A	N/A	N/A	N/A	N/A
WASHING	OC-202-RM122-HHW-FD	42	Room 122 high hand washing faucet	non-detect	No	N/A	N/A	N/A	N/A	N/A	N/A	N/A	N/A
WASHING	OC-202-RM122-LHW-FD	43	Room 122 low hand washing faucet	non-detect	No	N/A	N/A	N/A	N/A	N/A	N/A	N/A	N/A

Table 2. Summary Statistics

CATEGORY	INITIAL SAMPLING RESULTS	RE-SAMPLING RESULTS			POST REMEDIATION
	Recommended Level = 10 parts per billion (ppb)				
	First Draw	Water Fountain Follow up Flush Sample - Collected day before First Draw Sampling	First Draw (ppb)	Follow up Flush - Collected 30 seconds after First Draw Sampling	First Draw
Total Drinking	11	0	0	0	0
Total Drinking > 10 ppb	0	0	0	0	0
Total Cooking	2	0	0	0	0
Total Cooking > 10 ppb	0	0	0	0	0
Total Washing/Brushing	28	0	0	0	0
Total Washing/Brushing > 10 ppb	0	0	0	0	0
Total Samples	41	0	0	0	0
Total Samples > 10 ppb	0	0	0	0	0

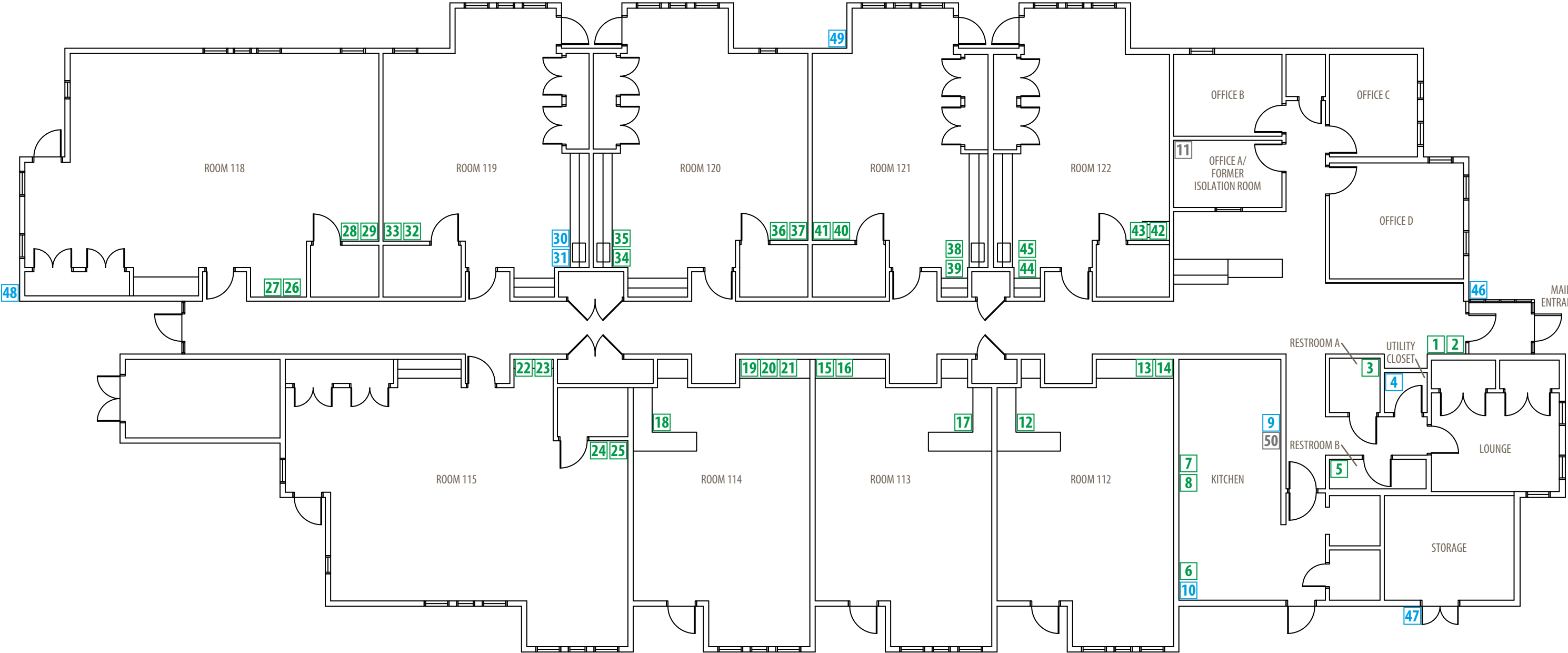


Figure 1.  
Building 202 – First Floor Plan  
NAS Oceana Dam Neck Annex  
Virginia Beach, Virginia



Outlet No.	Type of Fixture	Location Description	Exceeded?
1	Water fountain (cooler)	Hallway	No
2	Water fountain (cooler)	Hallway	No
3	High hand washing faucet	Restroom A	No
4	Utility sink	Utility Closet	Not sampled – not used for drinking
5	High hand washing faucet	Restroom B	No
6	Kitchen sink used for dishwashing and food preparation	Kitchen	No
7	High hand washing faucet (with emergency eye wash station)	Kitchen	No
8	Kitchen sink used for dishwashing and food preparation	Kitchen	No
9	Combined ice maker and water dispenser (ice outlet)	Kitchen	Not sampled – not used for drinking
10	Dishwashing sprayer	Kitchen	Not sampled – not used for drinking
11	Low hand washing faucet	Office A/Formal Isolation Room	Outlet removed
12	High hand washing faucet	Room 112	No
13	Water fountain from combination sink	Room 112	No
14	High hand washing faucet from combination sink	Room 112	No
15	Water fountain from combination sink	Room 113	No
16	High hand washing faucet from combination sink	Room 113	No
17	High hand washing faucet	Room 113	No
18	High hand washing faucet	Room 114	No
19	Low hand washing and toothbrushing faucet	Room 114	No
20	Water fountain from combination sink	Room 114	No
21	High hand washing faucet from combination sink	Room 114	No
22	Low hand washing and toothbrushing faucet from combination sink	Room 115	No
23	Water fountain from combination sink	Room 115	No
24	Low hand washing faucet	Room 115	No
25	High hand washing faucet	Room 115	No
26	Low hand washing and toothbrushing faucet from combination sink	Room 118	No
27	Water fountain from combination sink	Room 118	No
28	Low hand washing faucet	Room 118	No
29	High hand washing faucet	Room 118	No
30	Low hand washing and toothbrushing faucet from combination sink	Room 119	No
31	Water fountain from combination sink	Room 119	No
32	Low hand washing faucet	Room 119	No
33	High hand washing faucet	Room 119	No

Outlet No.	Type of Fixture	Location Description	Exceeded?
34	Low hand washing and toothbrushing faucet from combination sink	Room 120	No
35	Water fountain from combination sink	Room 120	No
36	Low hand washing faucet	Room 120	No
37	High hand washing faucet	Room 120	No
38	Low hand washing and toothbrushing faucet from combination sink	Room 121	No
39	Water fountain from combination sink	Room 121	No
40	Low hand washing faucet	Room 121	No
41	High hand washing faucet	Room 121	No
42	High hand washing faucet	Room 122	No
43	Low hand washing faucet	Room 122	No
44	Low hand washing and toothbrushing faucet from combination sink	Room 122	No
45	Water fountain from combination sink	Room 122	No
46	Hose bib	Outside of Main Entrance	Not sampled – not used for drinking
47	Hose bib	Outside of Storage	Not sampled – not used for drinking
48	Hose bib	Outside of Room 118	Not sampled – not used for drinking
49	Hose bib	Outside of Room 121	Not sampled – not used for drinking
50	Combined ice maker and water dispenser	Kitchen	Outlet removed